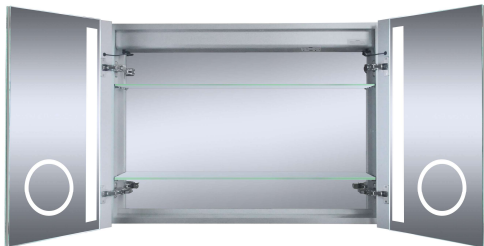


Model: 69224026



FEATURES

- Surface Mounting
- Double-door Medicine Cabinet
- Energy Efficient and Long-Lasting LED Lighting
- Aluminum Frame
- Double-side Mirror Door with Two Built-in 6" Dia. LED Lit Cosmetic Mirror
- 170° Soft-closing Hinges
- Two Adjustable Tempered Glass Shelves
- Two color temperatures (3000K & 6000K)
- Mirror Front Touch Switch Control
- 3-prong 120V Electrical Outlet (x2)
- USB Outlet (x2)
- Mirrored Interior
- Dimmable LED Lighting
- Copper-free Mirror

LIGHTING

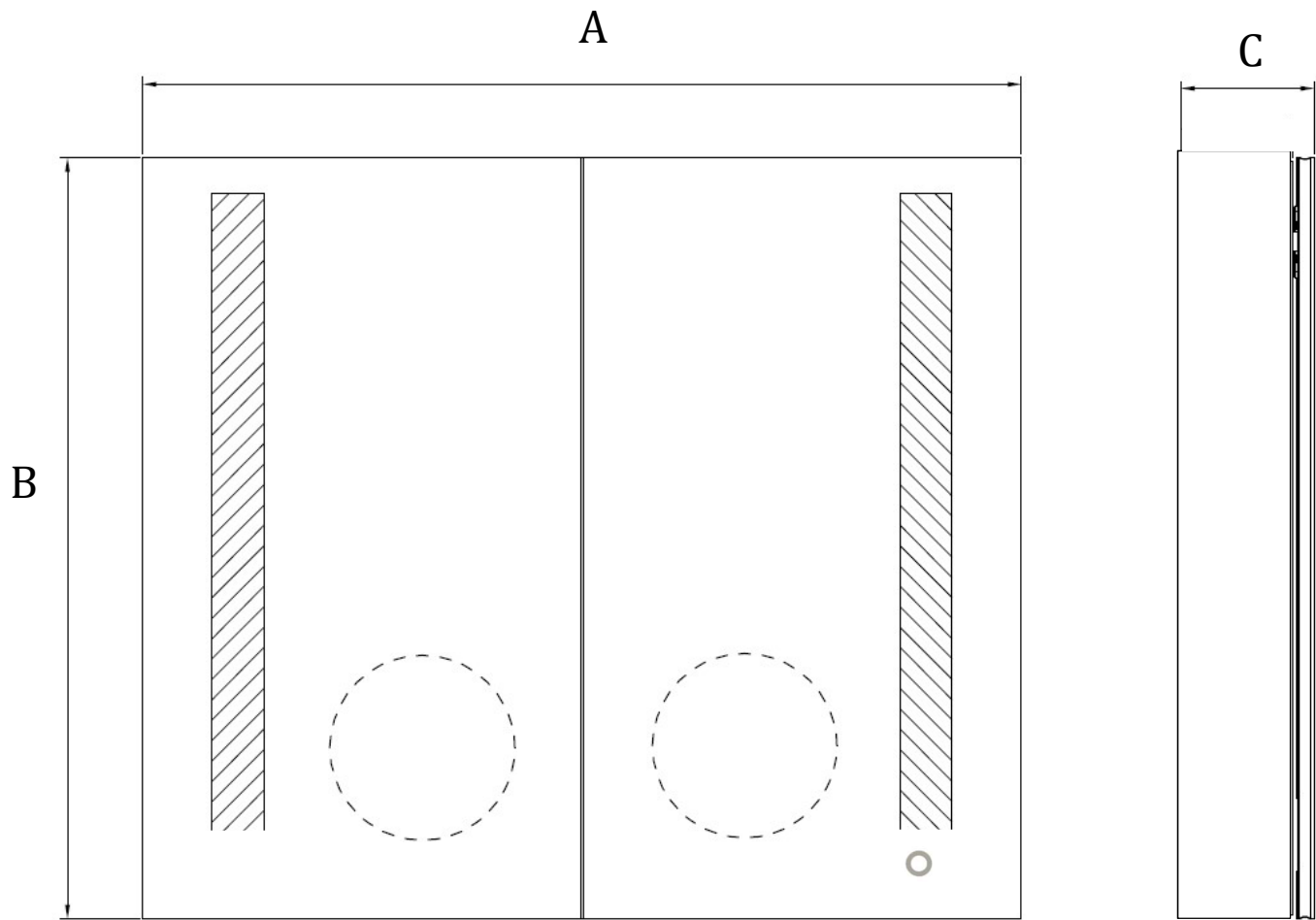
- LED (Light-Emitting Diode)
- Average Bulb Life of 50,000 hours
- Color Temperature: 3000K & 6000K
- Brightness: see page 2
- Power Consumption: see page 2

SAFETY

- IP44 Rated

OVERVIEW

We do not cut corners and only use the highest quality components and bulbs to make sure that the mirror will be maintenance free and function like the day you purchased for average 50,000 hours of use. We pride ourselves on providing unmatched price vs quality for all of our products. All mirrors come with a 5-year limited warranty.



Model #	Overall Dimensions			Brightness (Lumen)	Power Consumption (Watt)
	A	B	C		
69224026	40	26	5-1/4	1410	23